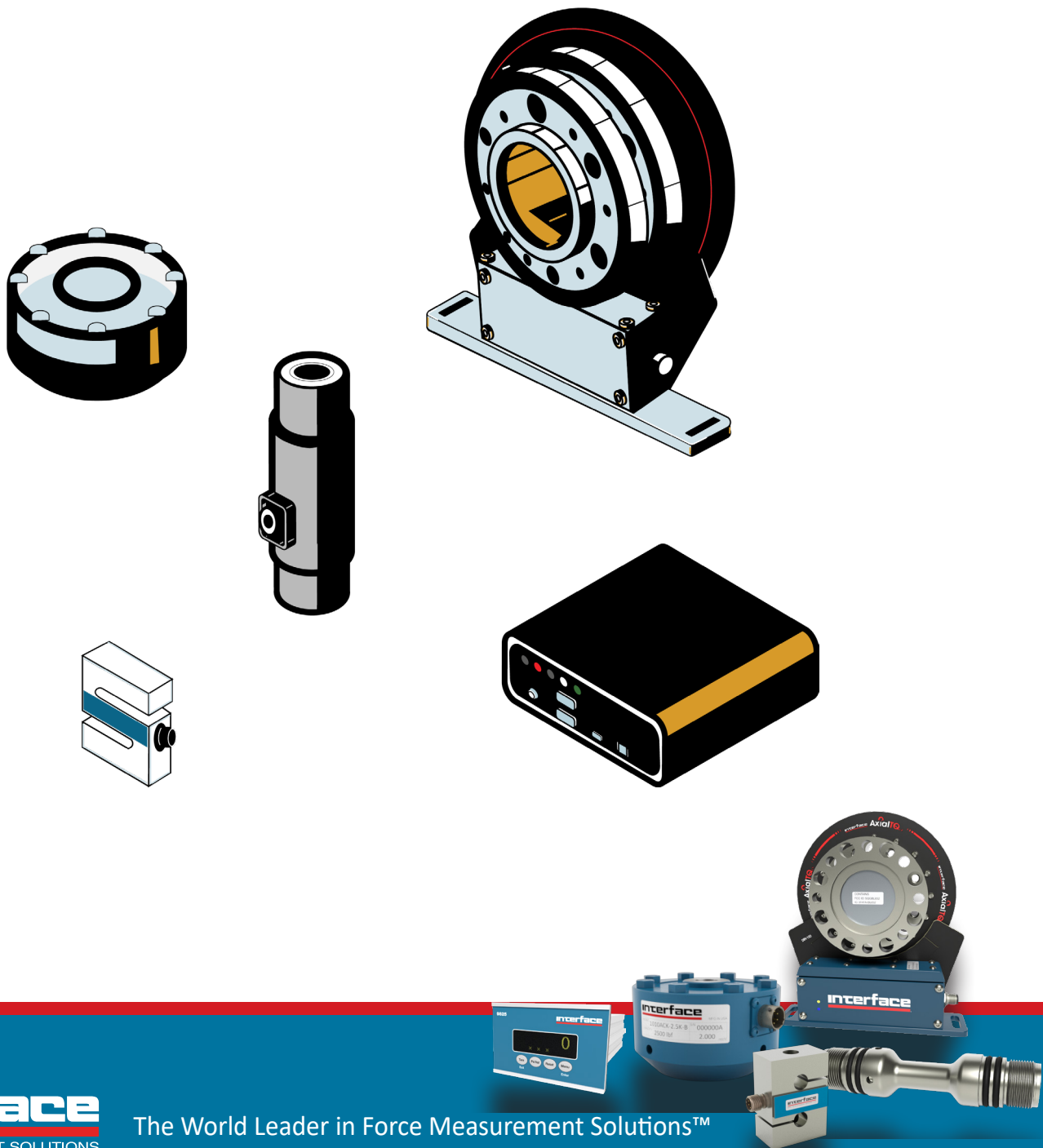


Interface

Summary Catalog



Summary Catalog v1.6 10-09-2023

Interface
FORCE MEASUREMENT SOLUTIONS

The World Leader in Force Measurement Solutions™

LOWPROFILE® LOAD CELLS



1000 Fatigue Rated
250 lbf to 1,000K lbf
1.25 kN to 4,448 kN
Fully Reversed High Cyclic Loading



1100 Ultra Precision
Very High Accuracy
300 lbf to 200K lbf
1.33 kN to 890 kN



1200 Standard Precision
300 lbf to 2,000K lbf
1.33 kN to 8,896 kN



12X8 Flange Mount
Standard Precision
30K lbf to 330K lbf
133 kN to 1,468 kN



1500 Compact
Low Capacity
25 lbf to 300 lbf
111 N to 1.33 kN



1600 Gold Standard®
Calibration
500 lbf to 200K lbf
2.22 kN to 900 kN
4% lower load limit
per ASTM E74



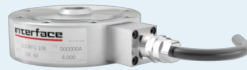
1700 Flange Mount
220 lbf to 14K lbf
1 kN to 63 kN
Mounts Directly to Cylinders



1800 Platinum
Standard® Calibration
1.1K lbf to 55K lbf
4.89 kN to 245 kN
Capable of 2% lower
load limit per ASTM E74



2400 Stainless Steel
100 lbf to 300K lbf
445 N to 1,334 kN
Environmentally Sealed
Hermetic Deal Available



3200 Precision
Stainless Steel
2.5K lbf to 100K lbf
11.1 N to 445 kN
Hermetically Sealed



3410/3420/3416/3430
Intrinsicly Safe Load Cells
750 to 60K lbf
3.37 kN to 267 kN



Internally Amplified
Load Cells
3-Wire Amplified Tension
& Compression Load Cells



OTHER LOAD CELLS



BPL Ultra Low Height
Compression Only
50 lbf to 500 lbf
250 N to 2,500 N
Self-Centering in all Directions
High Output 4 mV/V



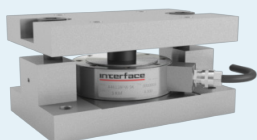
WSSCL Stainless Steel
Low Profile Compression
Load Cell
220 lbf to 440.9K lbf
100 kg to 200 MT



WTS 1200 Standard Precision
LowProfile® Wireless Load Cell
300 lbf to 2,000K lbf
1.33 kN to 8,896 kN



2000/2160/2200/2300
Column and Canister
Load Cells
50K lbf to 1M lbf
630 kN to 4450 kN



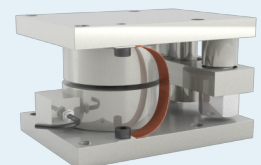
A4200/A4600
WeighCheck™ Load Cells
2.5 lbf to 50K lbf
11.1 kN to 222 kN



IPCD Pressure Compensated
Downhole Load Cell
High accuracy
Maintenance free

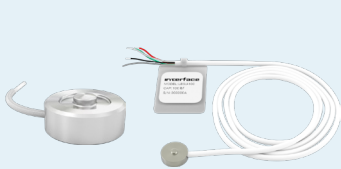


REC Rod End
1K lbf to 50K lbf
5 kN to 220 kN

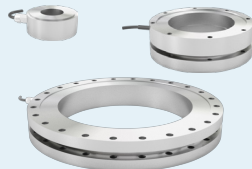


WSSCL-MOUNT Weighing
Assembly
220 lbf to 440.9K lbf
100 kg to 200 MT

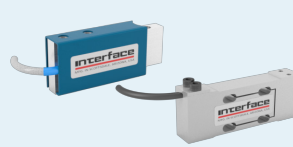
MINI LOAD CELLS



ConvextBT/LBMU/LBM
Load Buttons
25 lbf to 50K lbf
0.11 kN to 130 kN



LW/LWPF1/LWPF2
Load Washer
5 lbf to 135K lbf
0.02 kN to 600 kN



MB/MBP/MBI Mini Beam
and Overload Protected
Mini Beam
2 lbf to 2500 lbf
10 N to 1.25 kN
Safe Overload to 10x Capacity



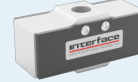
MBS Parallelogram Load Cell
2.2 lbf to 100 lbf
9.8 N to 445 N



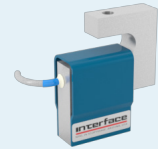
MCC MCC Miniature
Compression Load Cell
112.4 lbf
500 N



PBLC1/PBLC2/PBLC3 Pillow
Block Load Bearing Load Cell
1.1K lbf to 22.5K lbf
5 kN to 100 kN



SML Low Height S-Type
5 lbf to 2000 lbf
22 N to 9 kN
5 lbf, 10 lbf, 5 N, and 45 N Models
Feature 10x Overload Protection



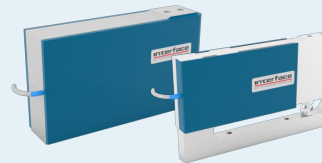
SM S-Type
10 lbf to 1000 lbf
50 N to 5000 N



SMT Overload
Protected S-Type
1.1 lbf to 450 lbf
5 N to 2000 N
500% +1,000% FS Safe Overload



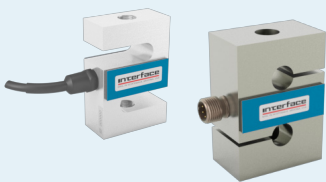
SMTM Micro S-Type
5 lbf to 50 lbf
20 N to 200 N
Micro-sized 3/4" x 3/4" x 1/4"
1,000% Safe Overload



SPI Platform Scale Load Cell
3 lbf to 150 lbf
13.34 N to 667.2 N



SSB Sealed Beam
50 lbf to 10K lbf
222 N to 44.48 kN



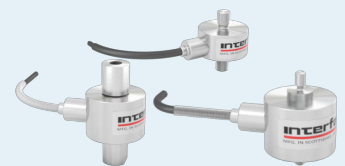
SSM/SSM2 Sealed S-Type
50 lbf to 5K lbf
200 N to 25 kN
Available with Fatigue Rated Options



SuperSC S-Type
Miniature Load Cell
25 lbf to 1,000 lbf
100 N to 5 kN

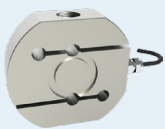


ULC Ultra Low Capacity
0.11 lbf to 0.45 lbf
0.5 N to 2 N
Overload Protected



WMC/WMCP/WMCFP
Sealed Stainless Steel
1.1 lbf to 10K lbf
500 gf to 45 kN
Overload Protected
Male Threads

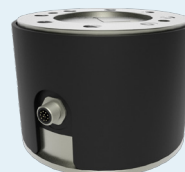
MULTI-AXIS SENSORS



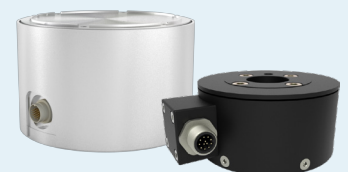
WSSB Welded Stainless
Steel IP68 Environment
Protected S-Beam
551 lbf to 44.1K lbf
250 kg to 20 MT



3-Axis Force
Force: 0.45 lbf to 112K lbf
Force: 2 N to 500 kN

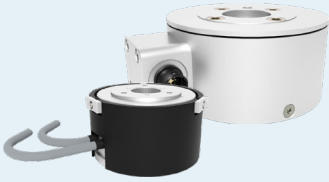


3AR Series Round
3-Axis Load Cells
Force: 2.2K lbf to 112K lbf
Force: 10 kN to 500 kN



6-Axis Force Torque
Force: 11.2 to 180K lbf
Torque: 8.85 lbf-in to 354K lbf-in
Force: 50 N to 800K N
Torque: 1 Nm to 40K Nm

MULTI-AXIS SENSORS CONTINUED



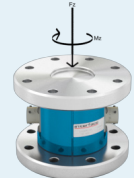
6ADF Series 6-Axis DIN Flange-Type Load Cells
Force: 20 N to 1.2 kN
Torque: 1 Nm to 60 Nm



1216/1516/2816 Axial Torsion
Force: 100 to 15K lbf
Torque: 50 to 7.5K lbf-in
Force: 1.11 to 66.7 kN
Torque: 5.6 to 847 Nm
Fz, Mz

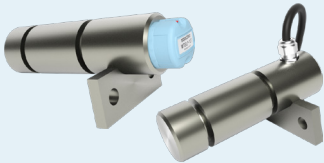


5200 XYZ Force and Moment
Force: 1K to 50K lbf
Moment: 400 to 20K lbf-in
Force: 4.45 to 222 kN
Moment: 45.2 to 2.26K Nm
Fz, Mx, My

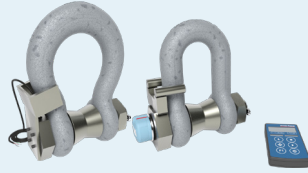


5600 2-Axis Axial Torsion
Force: 6K to 180K lbf
Torque: 5K to 300 lbf-in
Force: 27 to 800 kN
Torque: 560 to 33K Nm
Fz, Mz

LOAD PINS, TENSION LINKS, AND LOAD SHACKLES



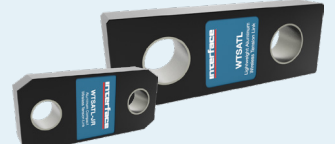
LP/WTSLP Load Pins
Up to 3,000K lbf
Up to 13.3 kN
Custom Designs Available with Amplification, Submersible, Wireless, and ATEX Options



ISHK/WTSSHK Load Shackles
2.2K lbf to 2,205K lbf
1 mt to 1K mt
Available with Amplification, Submersible, Wireless, and ATEX Options



ITL/WTSTL Tension Links
11K lbf to 220.4K lbf
5 mt to 100 mt
Custom Designs Available with Amplification, Submersible, Wireless, and ATEX Options



WTSATL/ WTSATL-JR Lightweight and Compact Aluminum Wireless Tension Link
2.2K lbf to 661K lbf
1 mt to 300 mt

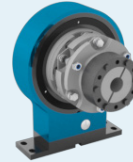
ROTARY TORQUE TRANSDUCERS



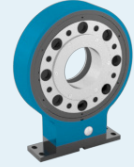
AT104 Compact Size Force and Torque Transducer
4.5/0.89 lbf/lbf-in & 11.2/4.4 lbf/lbf-in
20/0.1 N/Nm & 50/0.5 N/Nm



AxialTQ[®] Rotary Torque
885 lbf-in to 88.5K lbf-in
100 Nm to 10K Nm



T1 Torque Coupling
400 lbf-in to 9K lbf-in
50 Nm to 1K Nm
Bearingless



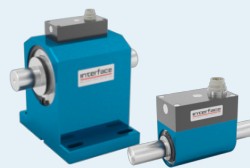
T27 Hollow Flange Bearingless
443 lbf-in to 8.85K lbf-in
50 Nm to 1K Nm



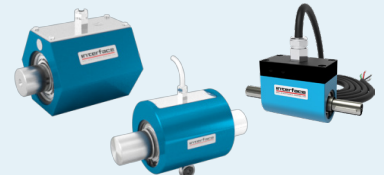
T2/T4 Ultra and Standard Precision
0.88 lbf-in to 177K lbf-in
0.1 Nm to 20K Nm



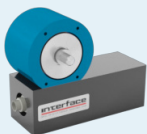
T3/T5 Ultra and Standard Precision Pedestal Mount
0.88 lbf-in to 177K lbf-in
0.1 Nm to 20K Nm



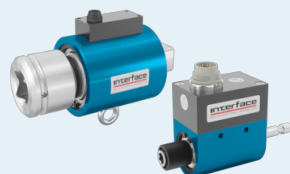
T6/T7 Dual Range
44.3/4.43 lbf-in to 4.43K lbf-in to 443K lbf-in
5/0.5 Nm to 500/50 Nm



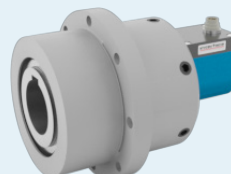
T8/T18/T23 General Purpose
1.77 lbf-in to 4.43K lbf-in
0.2 Nm to 500 Nm



T11 Bearingless
0.04 lbf-in to 1.327K lbf-in
0.005 Nm to 150 Nm



T12/T15 Square Drive
0.88 lbf-in to 177K lbf-in
0.1 Nm to 5K Nm



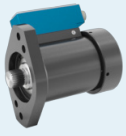
T22 Pulley Belt
177 lbf-in to 44K lbf-in
20 Nm to 5K Nm
High Raidal



T25 High Speed
0.885 lbf-in to 44.3K lbf-in
0.1 Nm to 5K Nm

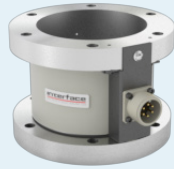


REACTION TORQUE TRANSDUCERS



T31, T32, T33, & T34 Spindle Torque

8.85 lbf-in to 4.43K lbf-in
1 Nm to 500 Nm
Speeds Up to 2K RPM Integrated
Speed/Angle Measurement



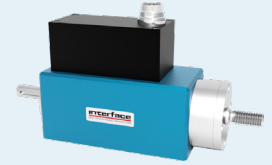
5330 Hollow Flange

60 lbf-in to 100K lbf-in
6.8 Nm to 11.3K Nm



5400 Series Flange Style

1K lbf-in to 500K lbf-in
110 Nm to 55K Nm



AT105 Contactless Force Torque Transducer

22.5/17.7 lbf/lbf-in 56.2/44.3 lbf/lbf-in &
112.4/44.3 lbf/lbf-in
100/2 N/Nm 250/5N/Nm & 500/5 N/Nm



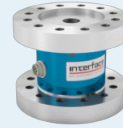
MRT/MRTP Miniature Reaction Torque Series

1.77 lbf-in to 177 lbf-in
0.2 Nm to 2 Nm
7x Overload Protected



MRT2/MRT2P Miniature Reaction Torque Series

1.77 lbf-in to 443 lbf-in
0.2 Nm to 50 Nm
3x Overload Protected



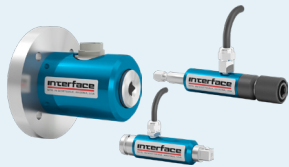
TS11 Flange Style

88.5 lbf-in to 177K lbf-in
10 Nm to 20K Nm



TS12 Shaft Style

0.04 lbf-in to 177K lbf-in
0.005 Nm to 20K Nm



TS14/TS15/TS17 Square and Hex Drive

1.77 lbf-in to 17.7K lbf-in
0.2 Nm to 5K Nm



TSQ High Capacity Square Drive

300K lbf-in to 3,000K lbf-in
34K Nm to 340K Nm

INSTRUMENTATIONS



480/482 Bidirectional Weight Indicator

Digital
Environmentally Protected



9330 High Speed Portable Display and Data Logger

3750Hz Peak Capture



1280 Programmable Weight Indicator and Controller

Analog load cell scales
Total scales
Serial scales
Program scales



920i Programmable Weight Indicator and Controller

32 scale accumulators
Millivolt calibration
5-point linearization and
geographical calibration



9325 Portable Sensor Display

Digital
Battery & USB Powered
TEDS Ready



9812-WTS Wireless Panel Mount Display For Single Transmitters

Wireless communication
Compatible with all WTS products



9825 General Purpose Indicator

General Purpose Instrument
mV/V Input Indicator



9840 Intelligent Calibration Grade Digital Indicator

Stores Multiple Calibrations



9840-400-1-T-4 4-Channel Intelligent Indicator

Digital 4-Channel
Intelligent Indicator



9840TQ mV/V Input Torque Transducer Indicator

Digital and Intelligent mV/V
Input Torque Transducer Indicator



INSTRUMENTATIONS CONTINUED



9850 mV/V Input Torque Transducer Indicator
25 lbf to 300 lbf
111 N to 1.33 kN



9870 High-Speed High Performance TEDS Ready Indicator
High Speed Digital



9890 Strain Gage, Load Cell, and mV/V Indicator
mV/V Input Indicator



9894 Analog Input Process Indicator
Analog Input Process Indicator



BSC1/BSC2/BSC4 Multi-Channel Bridge Amplifier or PC Interface Module
1 Channel
2 Channel
4 Channel



BTS Bluetooth Telemetry System
Bluetooth Strain Gage Transmitter



BX6-BT Portable 6-Channel High Speed Bluetooth Data Logger
Compact Size
Digital Inputs & Outputs



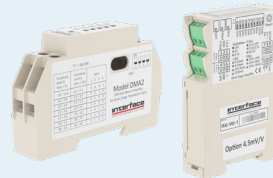
BX8 Data Acquisition and Amplifier System
8 Channel



CSC/LCSC Environmentally Sealed OEM Inline Signal Conditioner
Analog or Digital Output



CSD Embedded Load Cell Converter and Digitizer Module
RS232, RS485, Modbus, CANbus, CANopen, and ASCII



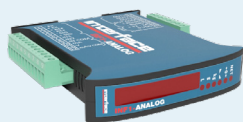
DMA2/ISG DIN Rail Mount Signal Conditioner
10-28VDC Power
High Accuracy



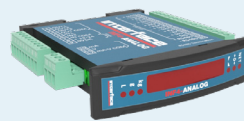
DIG-USB/DIG-USB-F USB and Fast USB Output Module
Configuration, Calibration, Graphing, Logging, and Display Software



INF-USB3/SI-USB4 PC Input Module
Single and Dual Channel
mV/V, VDC, or mA Input



INF1 Single Sensor Weight Transmitter and Indicator
RS485, Analog, CANopen, PROFIBUS, Modbus/TCP, Ethernet TCP/IP, Ethernet/IP, PROFINET IO, EtherCAT4



INF4 Two, Three, and Four Sensor Weight Transmitter and Indicator
RS485, Analog, CANopen, PROFIBUS, Modbus/TCP, Ethernet TCP/IP, Ethernet/IP, PROFINET IO, EtherCAT4



JB104SS 4-Channel Stainless Steel Junction Box
4 Channel Summing Capability



JB1100 4-Channel Advanced Signal Conditioning Transmitter Indicator and Junction Box
Four independent scales or four load cell inputs



SGA AC/DC Powered Signal Conditioner
AC/DC Powered
Millivolt to Analog Converter



VSC2 Rugged Compact Vehicle Powered Signal Conditioner
High Accuracy Precision
Differential Amplifier



WTS Wireless Telemetry System
Sensor Transmitters
Receivers
Displays



CALIBRATION



CX Series Precision mV/V Transfer Standard
Precision mV/V Output
Analog or Digital Output



GS-SYS Gold Standard® Calibration System Load Frame
Capacities up to 100K lbf



GS-SYS03 Gold Standard® Portable Load Cell Calibration System
Reduces Calibration Time 50-90%
Automatic Calibration and Archiving



GS-SYS04 Gold Standard® Portable E4 Machine Calibration System
Reduces Calibration Time 50-90%
Automatic Calibration and Archiving



IFV Interface Force Verification Frame
Up to 5,000 lbf capacity
Portable, Lightweight, and Accurate

Calibration and Repair Services

- NIST Traceability
- ISO 17025 Accredited
- ASTM E74 Calibration
- ANSI/NCSL Z540
- MIL-STD-45662A
- ISO 376

Accreditations

Interface is A2LA accredited (#1991.01) to perform the most accurate universal calibrations on all Interface and competitive force and torque transducers in 5 days



TEDS - Plug & Play Ready



USB Option Available



Software Available

Interface force measurement products are available in many design configurations for project designs requiring the highest performance.

To learn more about the Interface products or force measurement solutions call 480-948-5555.
www.interfaceforce.com

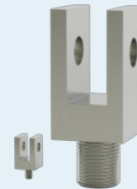
ACCESSORIES



CT Cable Assemblies
For connecting transducers to instrumentation
Standard and custom lengths
Shielded cable



CA Calibration Adapters
Improves accuracy
Spherical end for compression loading
Metric sizes available



CLV Clevises
Precision machined
Commonly used with REBs
Male threads



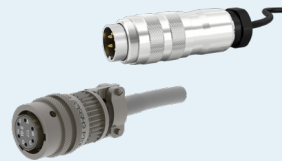
EVALUATOR 3 Interface Force Verification Frame
Used in testing, troubleshooting mV/V instrumentation



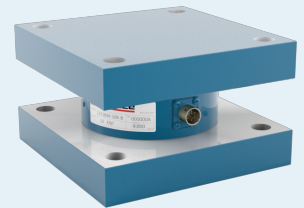
JN Jam Nuts
Used with REBs, clevises and calibration adapters
Flat, parallel surfaces
Standard thread sizes



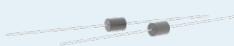
LB Load Cell Load Buttons
Converts universal cell to compression only
Spherical loading surface



MC/CN Mating Connectors
Interconnects between load cell and instruments



TP/BP Mounting Plates
Eliminates the requirement for expansion assemblies in most installations



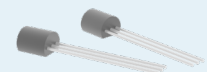
RCAL Resistors
Precision wire-wound
5 ppm/°C, 0.01%
Used for shunt calibration



REB Rod End Bearings
For tension applications
Reduces alignment error
Metric sizes available



TA/THD Thread Adapters
Adapts male to female
Common Interface thread sizes
Adapts one thread size to another



TEDS Interface Force Verification Frame
Provides Sensor with Electronic Identification
Plug & Play Ready

Interface is the world's trusted leader in technology, design and manufacturing of force measurement solutions. Our clients include a "who's who" of the aerospace, automotive and vehicle, medical device, energy, industrial manufacturing, test and measurement industries.

Interface engineers around the world are empowered to create high-level tools and solutions that deliver consistent, high quality performance. These products include load cells, torque transducers, multi-axis sensors, wireless telemetry, instrumentation and calibration equipment.

Interface, Inc., was founded in 1968 and is a US-based, woman-owned technology manufacturing company headquartered in Scottsdale, Arizona.

interface
FORCE MEASUREMENT SOLUTIONS

7418 East Helm Drive, Scottsdale, AZ 85260 ▪ 480.948.5555 ▪ interfaceforce.com

Aufgrund laufender Weiterentwicklungen sind Änderungen der Spezifikationen vorbehalten. Alle Angaben vorbehaltlich Satz- und Druckfehler.

nbn Austria GmbH
Riesstraße 146, 8010 Graz

+43 316 40 28 05

nbn
info@nbn.at | www.nbn.at